



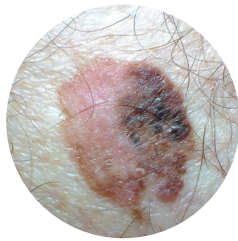
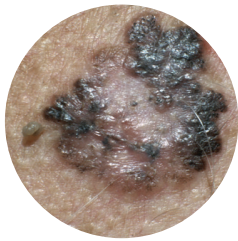
Mining & Quarrying  
OCCUPATIONAL HEALTH &  
SAFETY COMMITTEE

# Skin Cancer

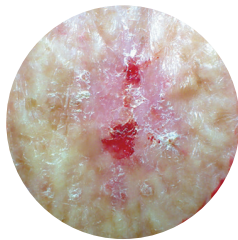
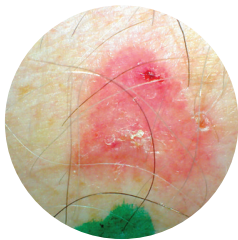
## Know the skin you're in!

Skin Cancer is preventable & can be cured when detected early

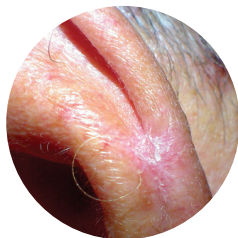
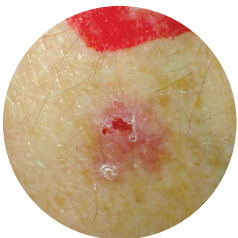
Taking the time to check your own skin may **save your life!**



MELANOMA

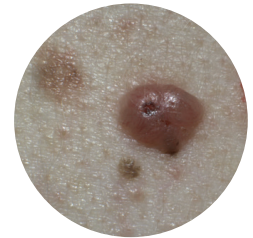
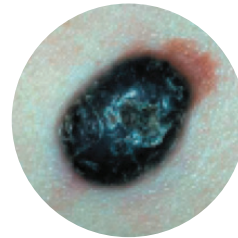


SQUAMOUS CELL CARCINOMA

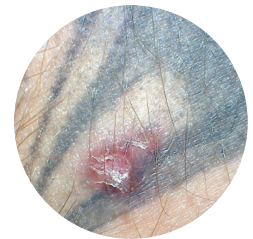
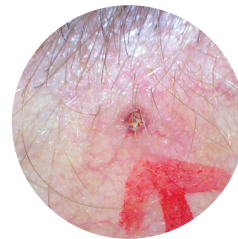


SUNSPOT

Take **5 minutes** at every change of season to check your entire skin including the soles of your feet, under your arms, scalp and nail beds for suspicious spots.



NODULAR MELANOMA



BASAL CELL CARCINOMA

If you notice a spot that:

- Is new
- has changed shape or colour
- bleeds or won't heal

**Consult your doctor immediately!**

**Early Detection SAVES LIVES**

Contact MAQOHSC today - Phone: 8204 9842

[www.maqohsc.sa.gov.au](http://www.maqohsc.sa.gov.au)



M E D I C @  
W O R K

MAQOHSC - Promoting and Supporting South Australian Mine & Quarry Workers

Skin Patrol - Australia's **leading** mobile skin cancer detection and education specialists